

TONON

made in Italy www.tononitalia.com

Tonon & C. spa Via Diaz 22
33044 Manzano - Italy
tel. +39 0432 740740
tonon@tononitalia.it
www.tononitalia.com

TONON

made in Italy www.tononitalia.com



flower
collection

flower

by martin ballendat for TONON



Riconosciuto a livello internazionale per il suo stile semplice e senza tempo, Martin Ballendat opera nel design industriale da oltre 38 anni. Martin Ballendat, nato nel 1958 a Bochum, in Germania, si è diplomato in disegno industriale alla Folkwang University of Applied Sciences, Essen nel 1983. Da quando ha fondato la sua azienda, Design Ballendat, nel 1995, Martin Ballendat ha creato una serie di prodotti importanti. Centinaia di questi hanno ricevuto i migliori riconoscimenti in concorsi internazionali di design. 40 RedDot di cui 3 Best of the Best, 23 IF Awards, Best of Neocon, Chicago, il Focus in Gold LGA Stuttgart, Best of the Best Interior Innovation Award, Designer of the Year 2019, Materialica Award in Gold, IIDEX Gold Award, Canada.

Internationally recognized for his simple and timeless style, Martin Ballendat has been dealing in the industrial design for more than 38 years. Martin Ballendat, born in 1958 in Bochum, Germany, received his diploma in industrial design at the Folkwang University of Applied Sciences, Essen in 1983. Since he set his own company up, Design Ballendat, in 1995, Martin Ballendat has created a variety of important products. Hundreds of them received top awards in international design competitions. 40 RedDot including 3 Best of the Best, 23 IF Awards, Best of Neocon, Chicago, the "Focus in Gold" LGA Stuttgart, Best of the Best Interior Innovation Award, Designer of the Year 2019, Materialica Award in Gold, IIDEX Gold Award, Canada.

Tonon 100% made in Italy

Since 1926 Tonon is a well-known international brand in the world of seating, reliable and synonymous with design and quality MADE IN ITALY. Characterizing features that come from the past: their origins date back to the twenties, include years of careful and creative manufacturing. Even after the industrialization of the fifties, the pleasure of thinking and making never ended. Tonon today bases itself on research and development, on new materials and technologies, with a craftsman's heart and an industrial mind.



Tonon & design

Behind every product stays a face. Important international architects are developing together with us proposals for the domestic and commercial markets. Professional people with different cultural backgrounds create our seating collections with great aesthetic and functional sensitivity and this in harmony with the declared Tonon philosophy: to present products for international markets.

Tonon & customized products

In parallel to the organization of the standard production, in Tonon we have a team which responds to the continuous and increasing demand of customized products, especially in the HORECA business (hotels, restaurants, cafeterias). Tonon is able to collaborate efficiently with the customers and with the design studios, creating new product versions.



Tonon & customers

Tonon customers are all over the world. Our sales office and our export managers are doing the best to assist our customers.



Tonon & environment

We are proud to be energy independent: with our solar energy system we are producing as much energy as we consume, which in terms of environmental sustainability corresponds to an emission reduction of 123.000 kg. of CO2 per year.



Casa&Soft a company of Tonon

In 2011 Tonon added as satellite the company Casa&soft. This company allows Tonon to get more and more involved in the soft seating. Specially for customized orders in the contract business, Tonon is now competitive also with their sofa products.



flower

design: martin ballendat

La scocca di "flower" si apre come i petali di un fiore, un design davvero simbolico, come suggerisce il suo nome. Flower è un prodotto fresco e innovativo che viene realizzato in due versioni: in schiuma integrale "soft touch" oppure imbottito in tessuto e pelle in diversi colori. Il design ergonomico e la leggera flessibilità dello schienale conferiscono a "flower" il massimo comfort. Basi diverse: gambe coniche in metallo, base a colonna girevole, gambe in legno massello e base in multistrato, vengono fissate ad una struttura in metallo nascosta nella scocca in schiumato. Con la sua forma accattivante, "flower" può essere utilizzata universalmente sia nelle aree residenziali che in quelle commerciali.

The "flower" shell opens like the petals of a flower, a truly symbolic design, as the name itself suggests. Flower is a fresh and innovative product that is realized in two versions: integral foam "soft touch" or softly padded in many colors of fabric or leather. The ergonomic design and the slightly flexible back give "flower" the maximum seating comfort. A wide range of bases are available: conical metal legs, rotating column base, solid wooden legs and a base in multilayer, which are held by a metal frame hidden in the foamed seat shell. With its appealing shape, "flower" can be used universally in both living and contract areas.



soft touch



900_11



900_L1



900_B1



900_C3
900_C5



900_01



900_A3 ○
900_A5 ○



900_74



900_81 ○





flower organic design

Il poliuretano “soft touch” è un materiale dalle caratteristiche molto interessanti: Grazie alla sua composizione chimica è indeformabile, mantenendo allo stesso tempo morbidezza e flessibilità. È ignifugo ed è l’alleato vincente per la sanificazione: infatti il materiale soft touch, non trattiene umidità e crea un ambiente ostile alla proliferazione di acari e batteri. Superando il test della candeggina, oggi più che mai siamo lieti di offrirvi una seduta di qualità, resistente e facilmente igienizzabile.

The “soft touch” polyurethane is a material with very interesting properties: thanks to its chemical composition, it is not deformable and at the same time retains its softness and flexibility. It is fireproof and the best ally for disinfection: The “soft touch” material does not store moisture and thus prevents the multiplication of mites and bacteria. Having passed the bleach test, we are more pleased than ever to be able to offer you high-quality seating furniture that is resistant and easy to disinfect



flower_900.81

flower ergonomic design

Flower rinnova i suoi petali. Con la sua scocca in poliuretano schiumato a freddo, Flower è disponibile in vari tessuti e pelli. La sapiente manualità dei tappezzieri riesce a valorizzarne la forma attraverso le cuciture, che diventano veri e propri dettagli di stile. Un'ampia gamma di materiali di rivestimento dona alla seduta una piacevole sensazione di morbidezza.

Flower renews its petals. With a flexible injected shell in polyurethane, Flower is available in various fabrics and leathers. The skilful dexterity of the upholsterers manages to enhance the shape through the seams, which become real style details. A wide range of materials give the seat shell a pleasant feeling of softness.



flower_9W0.01

upholstered



9W0_11



9W0_L1



9W0_B1



9W0_C3 ○
9W0_C5 ○



9W0_01



9W0_A3 ○
9W0_A5 ○



9W0_74 ○

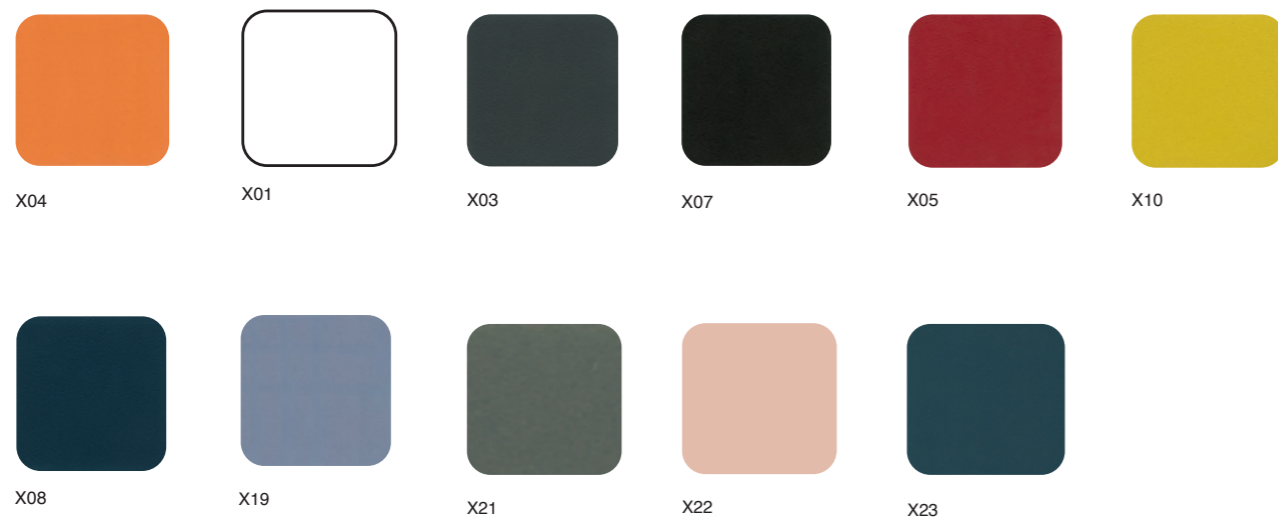


9W0_81 ○





SOFT TOUCH COLORS



SOFT TOUCH CERTIFICATIONS

The material used by Tonon for this collection satisfy the following regulations:

- Surfaces strength to cold liquids EN 12720/97
- Surfaces strength to cold liquids synthetic urine - quick-acting disinfection EN 12720/2013
- Colour strength to rubbing EN ISO 11640:1998
- Flame resistance 1.IM - BS CRIB 5 Cigarette test – CAL 117
- Surfaces strength to cleaning products PTP 53/95
- Ace bleach test, ammonia test (sol.10%), Baysan multipurpose, Lyso-Form for kitchen, Viakal, Vetril, Vim liquid, Cif multipurpose, Cif with bleach, Saniform 360
- Accelerated ageing through lamp UV ASTM G 154 -06

Official certifications available on request

Test by **CATAS**

SOFT TOUCH COLLECTION BLEACH-CLEANABLE*

DISINFECTION OF THE “SOFT TOUCH COLLECTION” SUCCESSFULLY TESTED WITH A SOLUTION OF WATER AND 0.1% SODIUM HYPOCHLORITE.

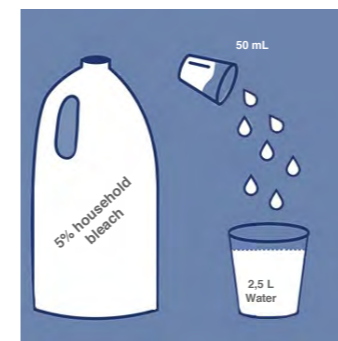
With the measures prescribed in relation to the Corona virus, we are all facing new challenges.

Hygiene measures have taken on a new importance.

We all need to know who can protect us from viruses and bacteria.

In the hotel and restaurant industry, this also includes sanitizing furniture.

The new protocols for the restaurant and hotel industry prescribe sanitation after each guest and, if possible, to follow the recommendations of the World Health Organization. What is prescribed in the hospitality industry can also easily be carried out in everyday private life.



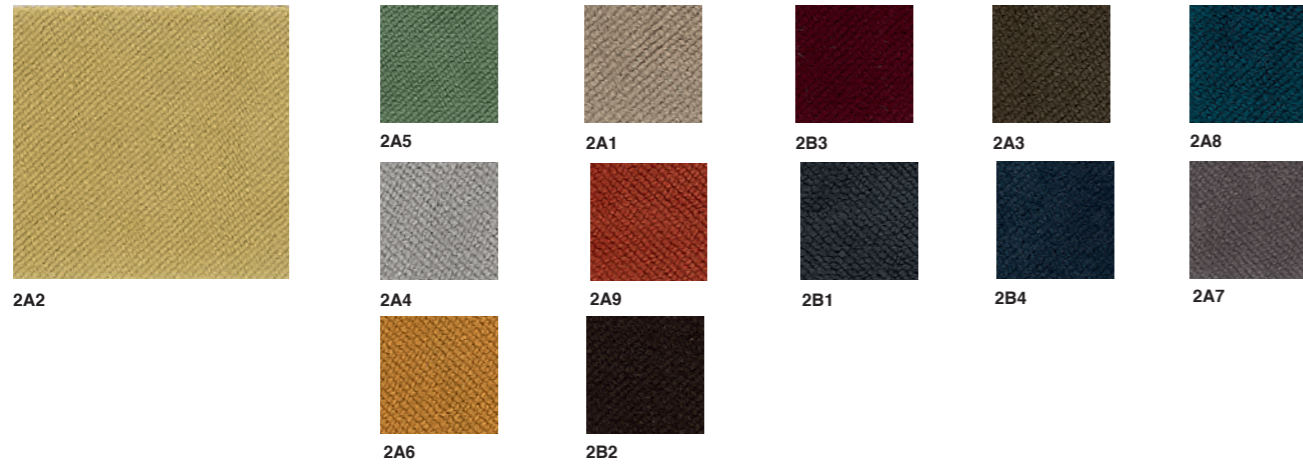
THE PROTOCOLS PRESCRIBE:

All surfaces must be cleaned with a solution of water and 0.1% sodium hypochlorite (the solution is formulated by adding 50 ml of 5% household bleach in 2.5 liters of water). The mixture formulated fights bacteria and germs, guarantees maximum cleaning and ensures that clean surfaces are sanitized.

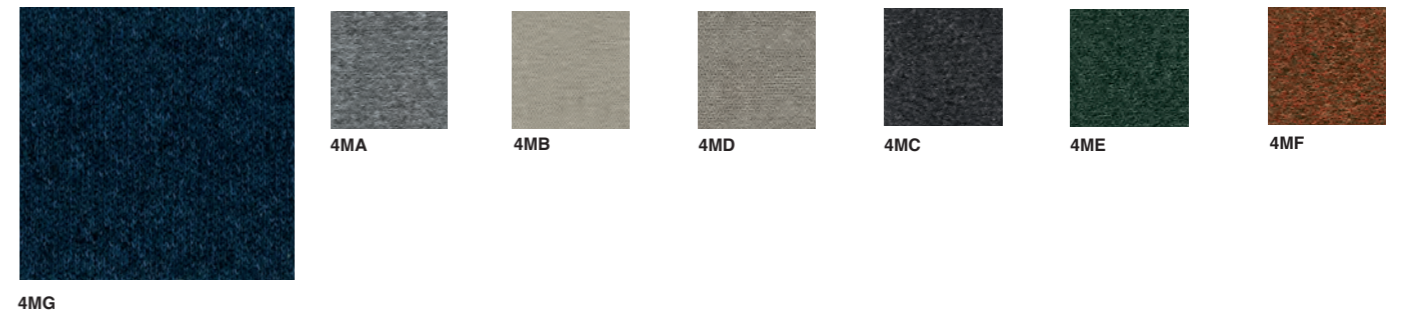
WE TOOK UP THIS CHALLENGE AND TESTED OUR SOFT TOUCH COLLECTION WITH THIS FORMULA.

After 1000 cycles no changes were detected on the surface of the material and in the color. We are proud to inform you that the polyurethane used for “moon” facilitates quick and effective cleaning according to the most stringent sanitization protocols.

FABRIC_STROPICCIO cat 2



Composition 100% PL
 Weight 500 gr/ml
 Width 140 cm
 Abrasion test Martindale 100.000
 Light solidity >5
 Cleaning



Composition 100% PES FR
 Width 140
 Weight 707 gr/m ± 5%
 Seam slippage resistance EN ISO 13936/2
 WARP 1,7
 WEFT 2,5
 Pilling resistance 4-5

Abrasion test end point (A)/fully worn off (B)
 EN ISO 12947-2
 50.000 (A)
 change aspect 3000c
 EN ISO 12947/2 / EN 14465 / EN ISO 105-A02
 3-4
 Lightfastness EN ISO 105-B02
 6-7

Acoustic PASS

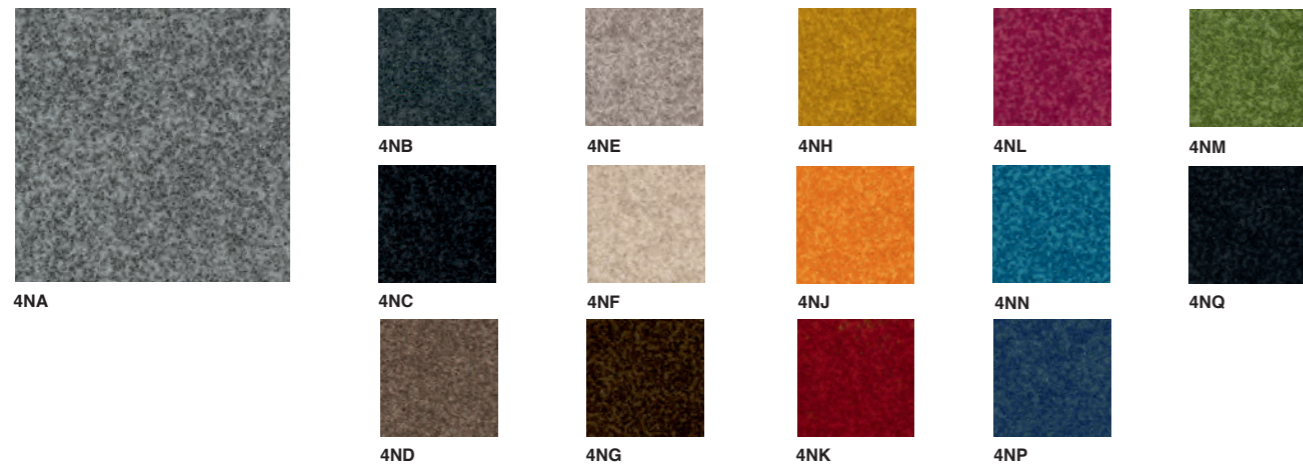
Assessment of ignitability
 Cigarette test / Match test
 BS5852 0/1
 EN 1021 1/2
 BS7176 Low hazard
 CAL TB117
 NFPA 260
 BS5852 0
 EN 1021 1
 IMO Annex 1 Part 8
 UNI 9175 Classe 1.IM
 NF D 60 013
 DIN 4102 B2
 PASS

Colour fastness to rubbing EN ISO 105-X12.
 DRY 5
 WET 4-5

Dimensional change in domestic washing and drying
 EN ISO 3759 / EN ISO 6330 / EN ISO 5077
 WARP -3%
 WEFT -1,5%

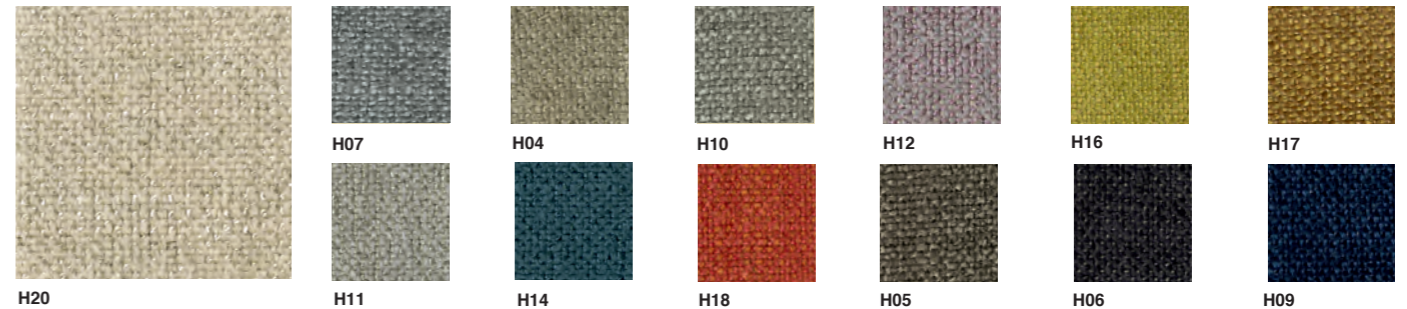
Cleaning

FABRIC_NORDIC cat 4



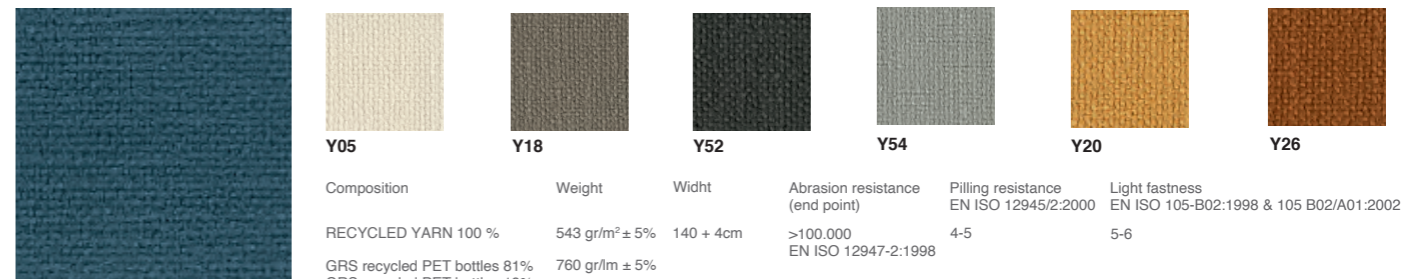
Composition 50% PES, 15% PA, 35% ACRIL
 Weight 410 gr/m2
 Width 140 cm
 Abrasion test Martindale 100.000
 Light solidity 6
 Cleaning

FABRIC_CLOU cat 6



Composition 48% viscose, 52%linen
 Weight 610 gr/ml
 Width 140 cm
 Abrasion test 22.000 martindale
 Light solidity 4-5
 Cleaning

FABRIC_NOAH cat 6



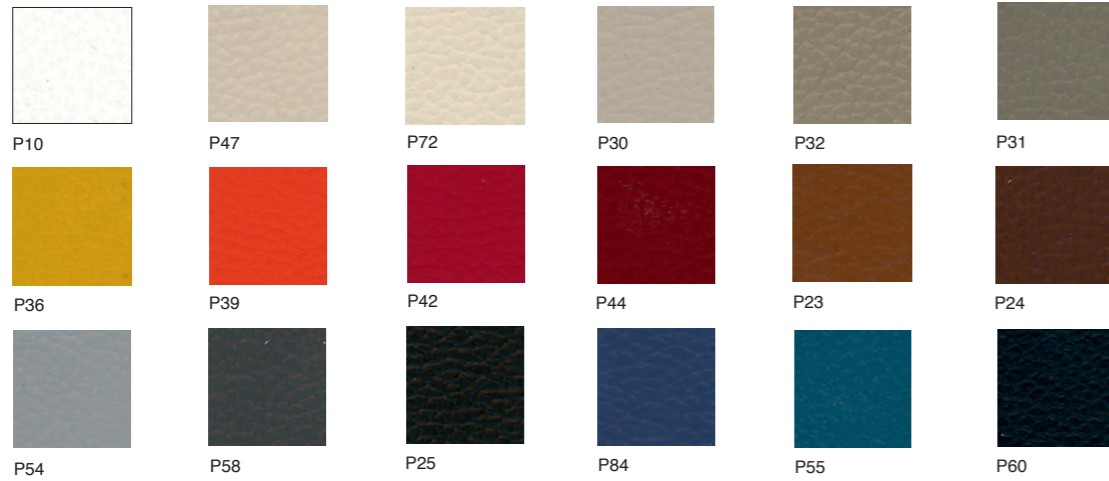
Composition RECYCLED YARN 100 %
 Weight 543 gr/m² ± 5%
 Width 140 + 4cm
 Abrasion resistance (end point) >100.000 EN ISO 12947-2:1998
 Pilling resistance EN ISO 12945/2:2000 4-5
 Light fastness EN ISO 105-B02:1998 & 105 B02/A01:2002 5-6

SUSTAINABILITY
 - Oeko-tex certified
 - REACH approved chemicals and dyes
 - Biocide and PFCs free
 - Zero-waste production
 - Manufactured under ISO 9001 and ISO 14001 standards
 - Made in Barcelona (EU)

WASHING CONDITIONS

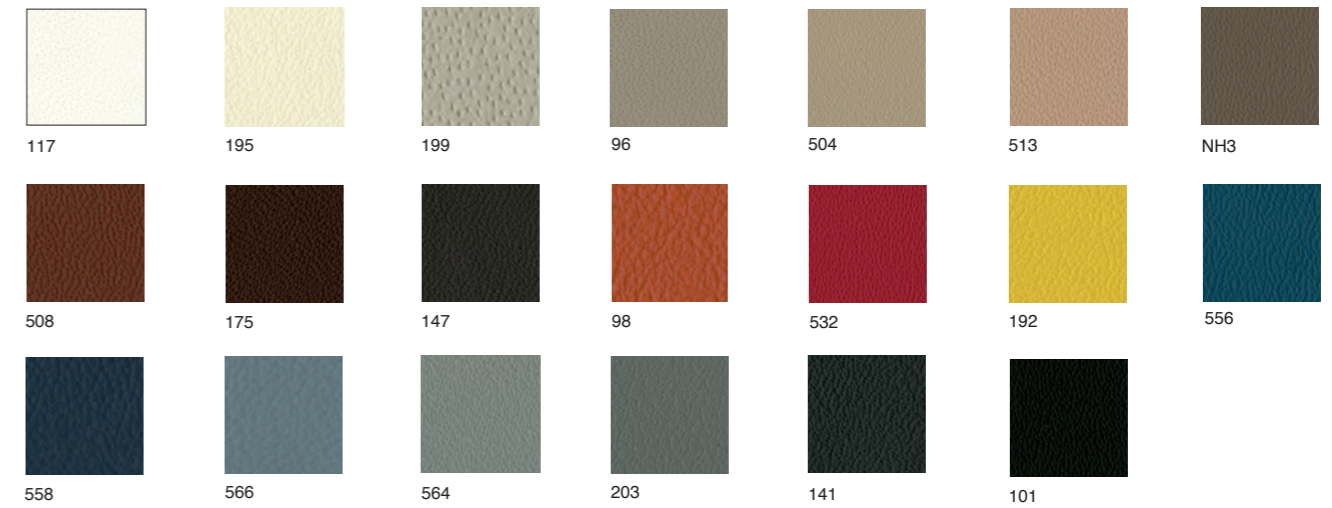


LEATHER_POLO cat 7



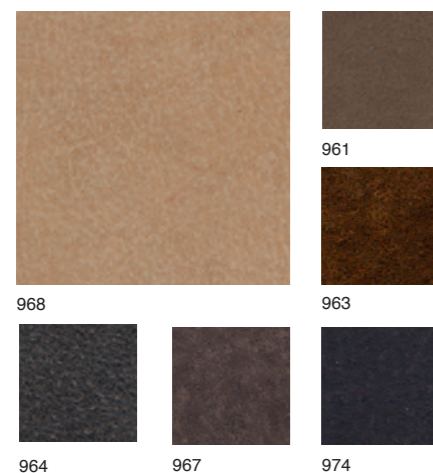
Thickness	0,9/1,1 mm		Fire resistance British Standard BS 5852 Part I (1979) N° 0: Cigarette Test N°1: Match Test	passes
Origin	Raw Hides		Imo FTP part 8-Resolution A652 (16) NI/0: Cigarette test NI/1: Match Test	passes
Place of origin	European			
Tanning	Chrome salts			
Dyeing	Aniline through - dyeing			
Finishing	Pigments finishing		TB 117-A11@2013:2013 Cigarette Test (California)	passes
Typology	Corrected grain			
Light fastness xenon lamp	UNI EN ISO 105 B02	Value > 8 Blu scale		
Tear strenghe	UNI EN ISO 3377 - 1	42 N/mm		
Dry rub fastness	ISO 11640	500 cycles value 4/5 grey scale		
Wet rub fastness	ISO 11640	250 cycles value 4/5 grey scale		
Flex crack resistance	ISO 5402	> 50.000 cycles		
Adhesion of finish	UNI EN ISO 11644 2008 - Dedalo Srl (Arzignano - VI)	9 N/cm		

LEATHER_SOFT cat 9



Thickness	1,1/1,2 mm			
Origin	Raw Hides			
Place of origin	European			
Tanning	Chrome salts			
Dyeing	Aniline through - dyeing			
Finishing	Water - based pigments			
Typology	Grain slightly corrected			
Light fastness xenon lamp	UNI EN ISO 105 B02	Value > 4 Blu scale		
Tear strenghe	UNI EN ISO 3377 - 1	> 28 N/mm		
Dry rub fastness	ISO 11640	500 cycles value 4 grey scale		
Wet rub fastness	ISO 11640	80 cycles value 5 grey scale		
Flex crack resistance	ISO 5402	25000 cycles		
Adhesion of finish	UNI EN ISO 11644 2008 - Dedalo Srl (Arzignano - VI)	> 7,5 N/cm		
Fire resistance	British Standard BS 5852 Part I (1979) N° 0: Cigarette Test N°1: Match Test			pass

LEATHER_SAVANA cat 9



Thickness	1,3/1,5 mm			
Origin	Raw Hides			
Place of origin	European			
Tanning	Chrome salts			
Dyeing	Aniline through - dyeing			
Typology	nubuck brushed by hand			
Light fastness xenon lamp	UNI EN ISO 105 B02	Value > 3 Blu scale		
Tear strenghe	UNI EN ISO 3377 - 1	> 45 N		
Dry rub fastness	ISO 11640	500 cycles value 4 grey scale		
Wet rub fastness	ISO 11640	250 cycles value 3/4 grey scale		
Flex crack resistance	ISO 5402	> 50.000 cycles		
Adhesion of finish	UNI EN ISO 11644 2008 - Dedalo Srl (Arzignano - VI)	10,5 N/cm		
Fire resistance	British Standard BS 5852 Part I (1979) N° 0: Cigarette Test N°1: Match Test			passes

Leather is a natural product, it quickly adjusts to the body temperature and is soft and comfortable. Every hide is a unique specimen with special properties that are harmonized as much as possible during the tanning and dyeing process. Small scars, insect bites, folds or stains do not reduce the quality of the leather; they simply confirm this naturalness. Leather can expand due to the body heat and, depending on the conditions, the folds will not reform. Tips for cleaning and care. Dust the leather with a damp rag. Small stains or ballpoint pen marks can be removed with a transparent rubber eraser. Soak up liquids immediately with a soft rag and then wipe them off with a damp rag. It is best to use distilled water and mild detergent. You should treat the furniture with a leather care product occasionally. Avoid aggressive cleaners. Please note that the colour of the leather may change over time if continually exposed to strong light; white leather is especially sensitive, this is not a material defect but a reaction of the natural product to strong light sources. The chemicals needed for the production of leather, used for the tanning, the dyeing and finishing of the raw hides, do not contain substances which can be harmful for health or the environment. Due to technical reasons it is not possible to guarantee the same tonality of colour from one bath to another.

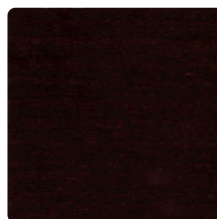
WOOD



3.011



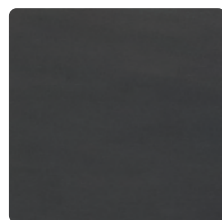
3.102



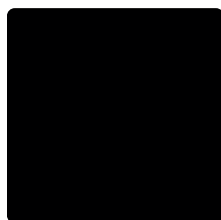
3.144



3.146



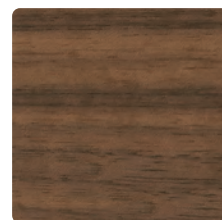
3.149



3.337



8.011



8.146

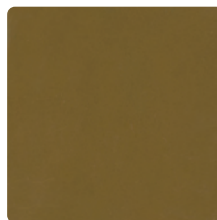
METAL



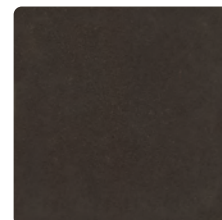
F040



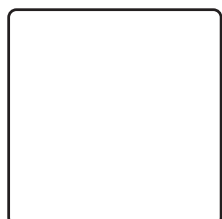
F047



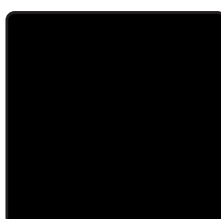
F071



F076



F061
A061



F054
A054
F064



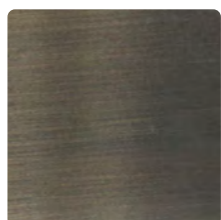
F059
A059



F074
A074



F077
A077



F078

Tonon spa si riserva il diritto
di apportare quelle modifiche
che ritenesse necessarie
o migliorative ai propri prodotti.
È vietata la riproduzione
anche parziale di questo catalogo.

Tonon spa reserves the right
to modify and improve its products
when considered necessary without
prior notice. It is strictly forbidden
to copy and or reproduce this
catalogue in full and or in part
in any format.

Graphic project: Nicholas Macorig