

TONON materials

the company

Passion, experience, experimentation: since 1926 pieces of furniture with an international design for the residential and ho.re.ca. world.

Thanks to the support of leading international designers, our style is eclectic and cosmopolitan. Our philosophy focuses on pursuing the correct balance between matter and form, aesthetics and function, producibility and originality. We combine the value of "doing well" with the constant search for the best solutions, in order to create chairs and furnishings for everyday use which can last over time, making the living of every environment, at home as in hotel, in restaurant as in office, a moment of well-being.

sustainability and environment

"Time and sustainability are incredibly intertwined. for us this means producing objects in the best possible way, so they can last over time. But that is not all. Sustainability is supporting: for us it means being a team of people who work together, supporting those who need it, encouraging to do better and better. "



INDEX FABRICS

Velvy - cat.2 - pag 1

I'm sustainable - cat.4 - pag 2

Noah - cat.4 - pag 3

Yacht Regatta - cat.4 - pag 5

Nordic - cat.4 - pag 6

Grinta - cat.4 - pag 8

In & Out - cat.6 - pag 9

Privilege - cat.6 - pag 10

LEATHERS

Polo - cat.7 - pag 12

Soft - cat.9 - pag 13

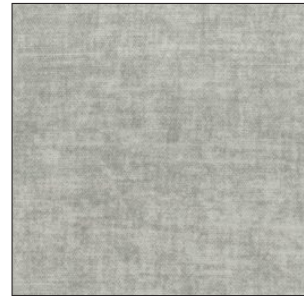
Savana - cat.9 - pag 14

PU "SOFT TOUCH" pag. 15

WOODS pag. 16

STEELS pag. 16

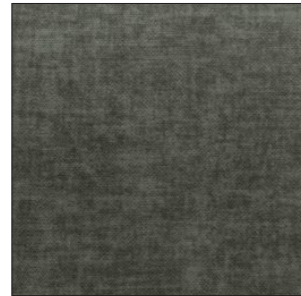
Velvy category 2 - Fabric



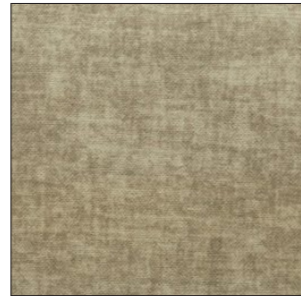
260



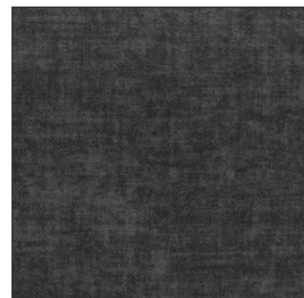
261



262



263



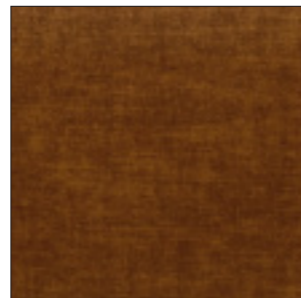
264



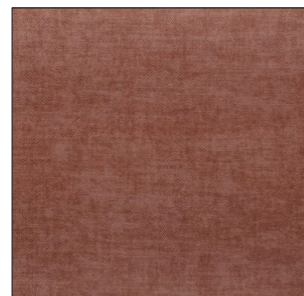
265



266



267



268



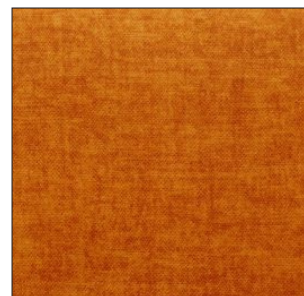
269



270



271



272



273



274



275

Velvy category 2 - Fabric

	Unità di misura/ Measurement Unit	Risultati/Results	Test
Altezza / Width	cm	140 cm	
Composizione / Composition	%	100% pl	
Peso / Weight	gr/mtl	560	
Martindale / Abrasion Resistance	cicli / cycles	>70.000	ISO 12947-2 2016
Pilling		4 - 5	ISO 12945-1 2000
Resistenza della cucitura / Seam Strength	N	Ordito / Warp : 304 N	ISO 13935-2 2014
		Trama / Weft : 609 N	
Resistenza allo slittamento della cucitura / Seam Slippage	mm	Ordito / Warp : 2,0 mm	ISO 13936-2 2004
		Trama / Weft : 2,0 mm	
Solidità del colore alla luce / Colour Fastness to light	scala / range 1:8	4	ISO 105-B02 2014
Solidità del colore al lavaggio a secco / Colour Fastness to dry cleaning		4 - 5	ISO 105-D01 2010
Solidità del colore allo sfregamento / Colour Fastness to rubbing		Secco / Dry: 4 - 5	ISO 105-X12 2016
		Umido / Wet: 4 - 5	

Manutenzione / Cleaning Instructions



Temperatura massima 30° C / Maximum 30° C



Candeggio non ammesso / Do not bleach



Temperatura massima 110° / Iron at low temperature



Non asciugare in asciugatrice / Do not tumble dry



Non asciugare al sole / Do not dry in the sun

Non strizzare / Do not wring out or twist



Lavare a secco / Professional dry-cleaning

Caratteristiche / Features

Antimacchia / Antistain

Idrorepellente / Water repellent

Trattamento Macchie / Stain Treatment

Penna : smacchiabile con acqua, in caso di macchie ostinate intervenire con acqua e sapone neutro.

Pen: stain removal with water. To use water and neutral soap to remove stubborn stain.

Birra - Caffè - Cioccolato - Latte - Pomodoro - Succo :

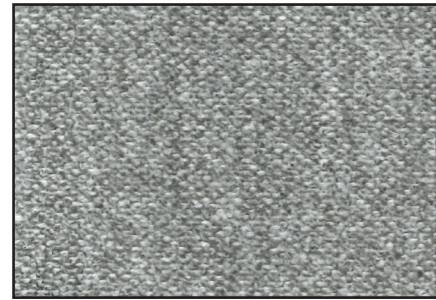
Smacchiabile con acqua, in caso di macchie ostinate intervenire con acqua e sapone neutro.

Beer - Coffee - Chocolate - Milk - Tomato - Juice :

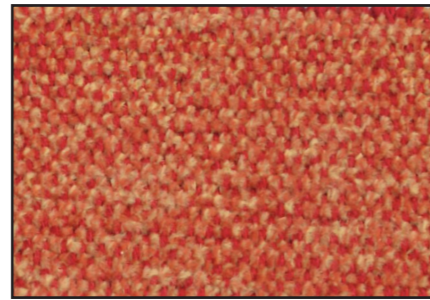
Stain removal with water. To use water and neutral soap to remove stubborn stain.

Nessuna garanzia per danni causati da interventi non corretti, detergenti non adatti o uso improprio.
No warranty will be assumed for damage caused by incorrect care, unsuitable cleaners or improper use.

I'm sustainable category 4



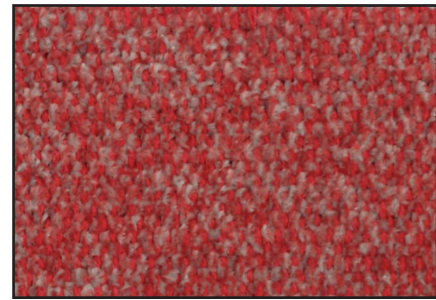
4AB



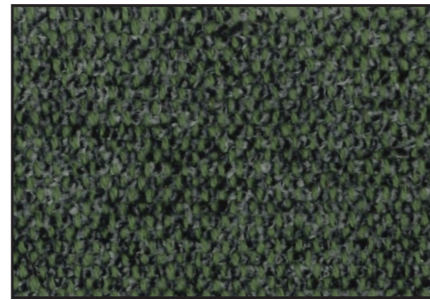
4AD



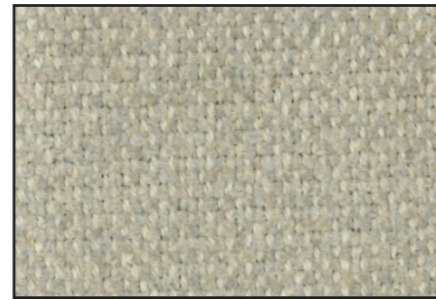
4A4



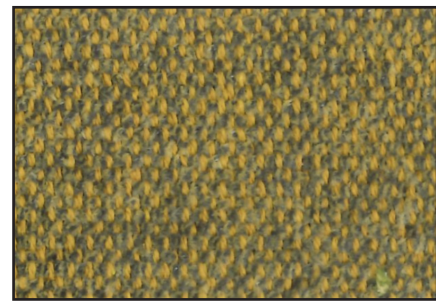
4A5



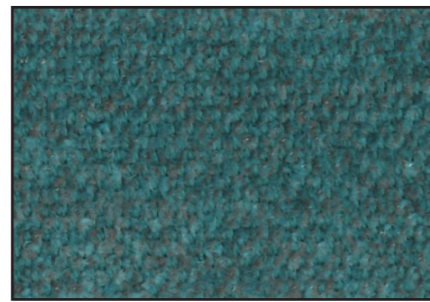
4AC



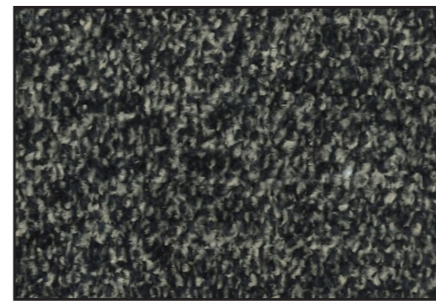
4A2



4A3



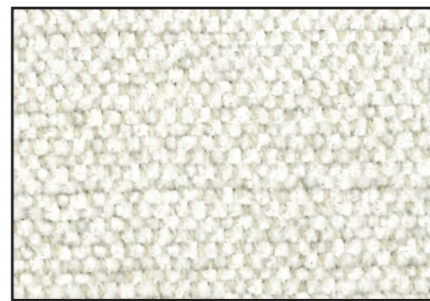
4A9



4A6



4A7



4A1

I'm sustainable category 4

Recycled fabric made from waste materials, manufactured with reduced overall water use and lower gas emission into to the atmosphere

Tessuto riciclato e ricavato da materiali di scarto, prodotto con un ridotto consumo complessivo di acqua e minori emissioni di gas nell'atmosfera.

SCHEDA TECNICA / DATASHEET

	Unità di misura/ Measurement Unit	Risultati/Results	Test
Altezza / Width	cm	140 cm	
Lunghezza rotolo / Roll Length	mt		
Composizione / Composition	%	56%co rigenerato 39%pl 5%pc	
Peso / Weight	gr/mtl	810	
Martindale / Abrasion Resistance	cicli / cycles	30.000	BS 5690
Pilling		3 / 4	BS 5811
Solidità del colore alla luce / Light Fastness	scala / range 1:8	5	UNI 7639/89
Solidità del colore allo sfregamento / Color Fastness to Rubbing	Scala del Grigi / Grey scale	Secco / Dry: 4	EN ISO 105-X12
		Umido / Wet: 3	
Variazioni dopo lavaggio a secco / Variations after dry cleaning		Ordito / Warp : 2%	UNI 9294
		Trama / Weft : 2%	
Variazioni dopo lavaggio in acqua / Variations after washing in water		Ordito / Warp : 2%	UNI EN 25077
		Trama / Weft : 2%	

Manutenzione / Cleaning Instructions



Temperatura max 30° / 30° fine wash



Candeggio non ammesso / Do not bleach



Temperatura massima 110° / Iron at low temperature



Lavaggio a secco / Professional dry-cleaning

Caratteristiche / Features

Idro-repellente / Water-repellent



Certificazioni / Certifications

BS 5852-1 : 1979

Nessuna garanzia per danni causati da interventi non corretti, detersivi non adatti o uso improprio.

No warranty will be assumed for damage caused by incorrect or unsuitable cleaners or improper use.

Noah category 4 - Fabric



Y45



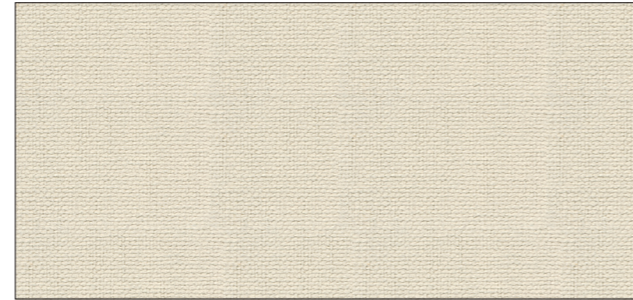
Y26



Y20



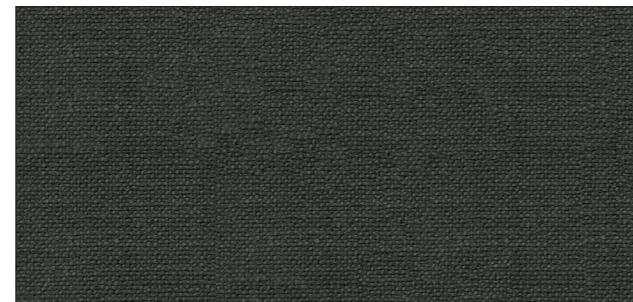
Y54



Y05



Y18



Y52



Noah category 4 - Fabric

FABRIC NOAH, MADE OF 100% RECYCLED YARN

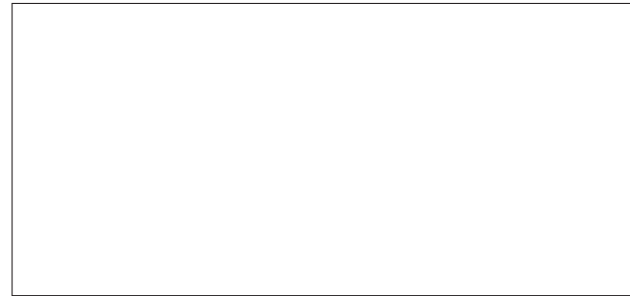
"Noah" un nuovo tessuto nella collezione Tonon. Il nostro pensiero è che sia molto importante rispettare il nostro pianeta. Il tessuto Noah è stato progettato proprio per questo motivo. Il tessuto Noah viene prodotto a Barcellona ed è realizzato con filato riciclato al 100%, che deriva dalle fibre ottenute dal recupero delle bottiglie in PET e da tessuti di scarto logorati. Il recupero e il riutilizzo dei rifiuti e il rispetto delle nostre risorse contribuiscono a far crescere il concetto di sostenibilità e a creare una società sempre più consapevole. Offriamo a voi, nostri clienti, questo materiale nuovo e innovativo sperando di dare un piccolo contributo per salvare il nostro pianeta insieme. Grazie!

"Noah" a new fabric in the Tonon collection. We think it's important to respect our planet. The fabric Noah was designed with this purpose. The fabric Noah, made in Barcelona, is produced from 100% recycled yarn, which is obtained from recycled fibers from PET bottles and worn fabric scraps. The recovery and reuse of waste and the respect for our resources contribute to sustainable thinking and a more conscious society. We offer you as our customers, this new and innovative material, hoping to give a small contribution to save our planet together with you. Thank you!

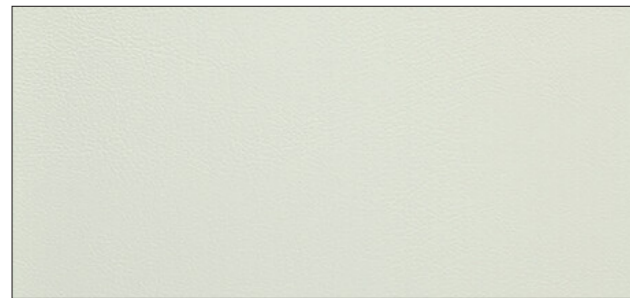
"Noah" ein neuer Stoff in der Tonon-Kollektion. Wir denken, es ist wichtig, unseren Planeten zu respektieren. Der Stoff Noah wurde zu diesem Zweck entworfen. Der in Barcelona hergestellte Stoff Noah wird aus 100% recycelten Garn hergestellt, das aus recycelten Fasern von PET-Flaschen und abgenutzten Stoffresten gewonnen wird. Die Verwertung und Wiederverwendung von Abfällen und der Respekt vor unseren Ressourcen tragen zu nachhaltigem Denken und einer bewussteren Gesellschaft bei. Wir bieten Ihnen als unseren Kunden dieses neue und innovative Material an, in der Hoffnung, gemeinsam mit Ihnen einen kleinen Beitrag zur Rettung unseres Planeten zu leisten. Vielen Dank!

Characteristics	Specifications	Care	Ignitability	Environment
<p>Total composition 100% PES REC</p>  <p>Width 140 + 4cm</p> <p>Weight 543 gr/m² ± 5 % 760 gr/lm ± 5 %</p> <p>Custom code UE: 5801.36.00 USA: 5801.36.00.20</p> <p>Laboratory test number IN-00825-2020-3</p>	<p>Seam slippageresistance (mm) EN ISO 13936/2:2004 3 2,5</p> <p>Abrasion resistance (End point) EN ISO 12947-2:1998 >100.000</p> <p>Pilling resistance EN ISO 12945/2:2000 4-5</p> <p>Lightfastness EN ISO 105-B02:1998 & 105 B02/A01:2002 5-6</p> <p>Colour fastnessto rubbing EN ISO 105-X12:2002 4-5 4-5</p>	<p>Soiling and cleanability FORD FLTM BN 112-08:2005 4-5</p> <ul style="list-style-type: none"> Spot-cleaning with soap and water No chemicals needed for cleaning Machine-washable <p>Washing conditions</p> <p>Dimensional change domestic washing and drying (%) EN ISO 3759:2008, EN ISO 6330:2000, EN ISO 5077:2008 -1.80% -1.40%</p>	<p>B55852Source 0 ✓</p> <p>B55852Source 1 UPON REQUEST</p> <p>EN1021-Part 1 ✓</p> <p>EN1021-Part 2 UPON REQUEST</p> <p>CAL TB 117 ✓</p> <p>NFPA 260 ✓</p> <p>BS 7176Low Hazard UPON REQUEST</p> <p>UNI 9175Clase 3IM UPON REQUEST</p>	<p>Environmental composition</p>  <p>• Recycled yarn 100%</p> <p>• GRS Recycled PET bottles 81%</p> <p>• GRS Recycled PES waste 19%</p> <p>Sustainability</p> <ul style="list-style-type: none"> Oekotex certified REACH approved chemicals and dyes Biocide and PFCs free Zero-waste production Manufactured under ISO 9001 and ISO 14001 standards Made in Barcelona (EU) <p>Notes This fabric has been designed and manufactured with 100% recycled materials. Variations in weave, shading, slubs, and texture give this fabric its unique personality and form part of its design.</p> <p>Attention When confectioning or washing a sofa cover with velcro, attach a protective strip to avoid damage to the fabric.</p>

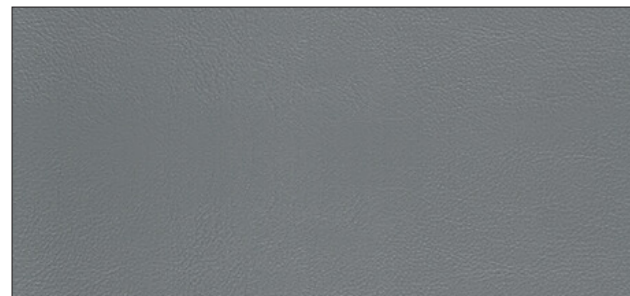
Yacht Regatta category 4 - Fabric



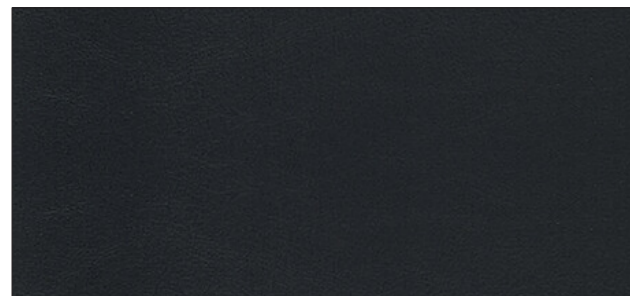
4Y1



4Y3



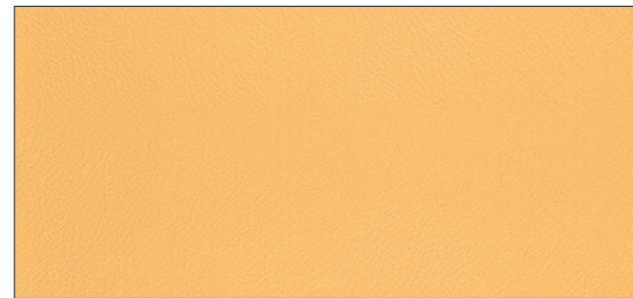
4Y5



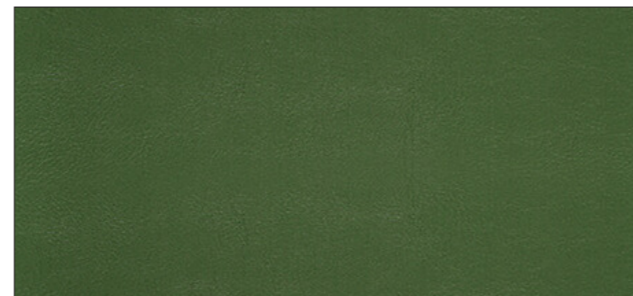
4Y7



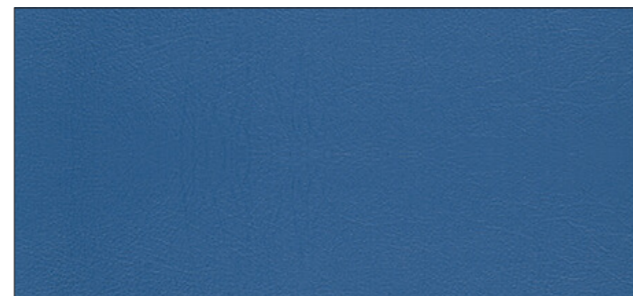
4Y2



4Y4



4Y6



4Y8

Yacht Regatta category 4 - Fabric

customs code

59031090.

use

upholstered furniture, medical, outdoor.

features

89% pvc - 11% polyamide, width cm ± 140, weight ± 690 g/m², thickness ± 1,20 mm.

roll length

approx. 25 lm., can also be cut-to-length at an extra cost.

abrasion resistance

> 250.000 rubs, ISO 5470-2.

colour fastness to light

6, ISO 105 B02.

fastness to rubbing

dry 4/5, wet 4/5, ISO 105 X12.

tensile strength

warp 400 N/5 cm, weft 100 N/5 cm, ISO 1421.

sustainability

phthalate free.

fire resistance

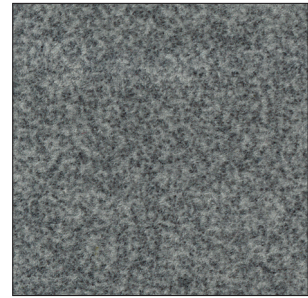
1IM - UNI 9175; EN 1021 1/2; BS 5852 part 1; NF P 92 507 M2; NFPA 260 Class 1; California TB 117-2013; IMO FTP Code 307 part 8.

attention

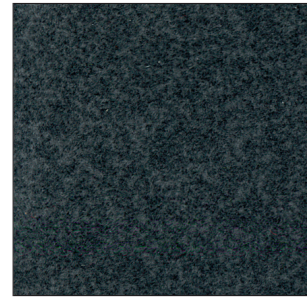
slight colour differences between different batches are allowed, we assume no responsibility for the transfer of colour/pigment caused by clothing and accessories.



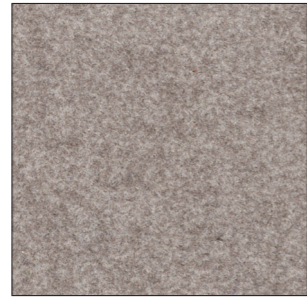
Nordic category 4 - Fabric



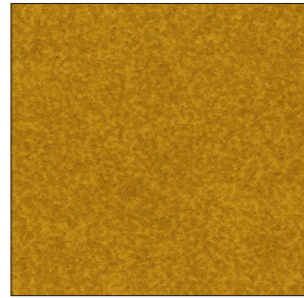
4NA



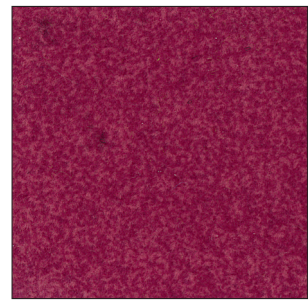
4NB



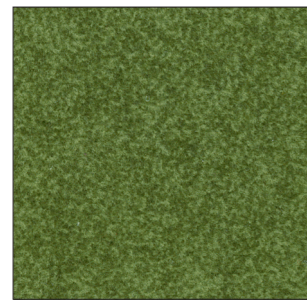
4NE



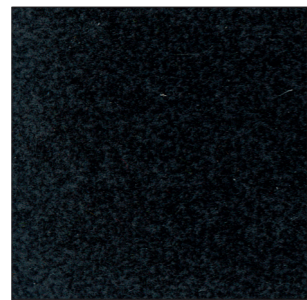
4NH



4NL



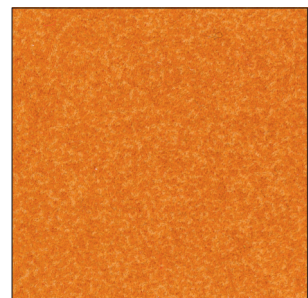
4NM



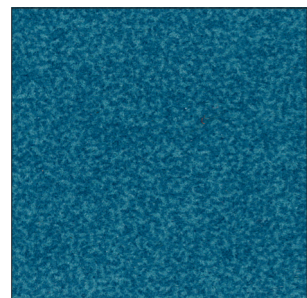
4NC



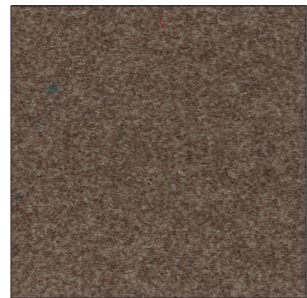
4NF



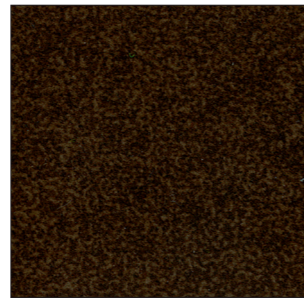
4NJ



4NN



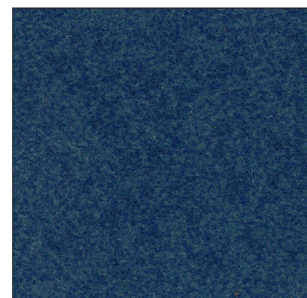
4ND



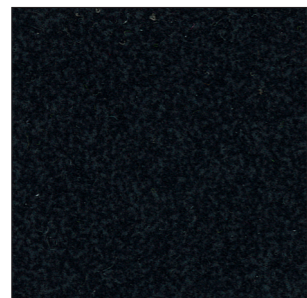
4NG



4NK



4NP



4NQ

Nordic category 4 - Fabric

Technical Specifications

Composition: 50% PES, 15% PA, 35% ACRIL

Width: 140 cm. UNE 400335

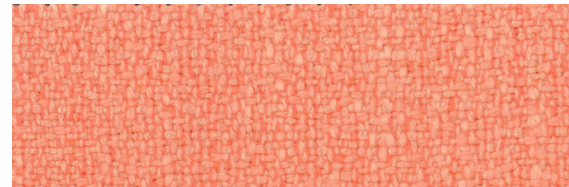
Weight m2: 410 gr/m2

Abrasion resistance: 250.000 cycles UNE EN ISO 12947

Pilling resistance: > 4 UNE EN ISO/DIS 12945-2

Dye resistance to light: 6 Good (ISO 105-B02)





4GA



4GB



4GD



4GC



4GF



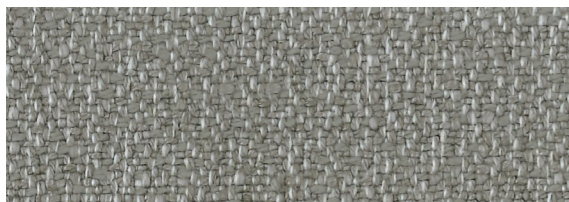
4GE



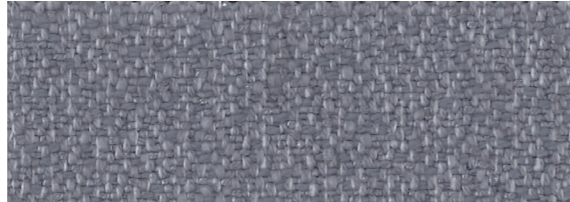
4GG



4GH



4GL



4GM



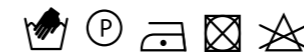
4GN



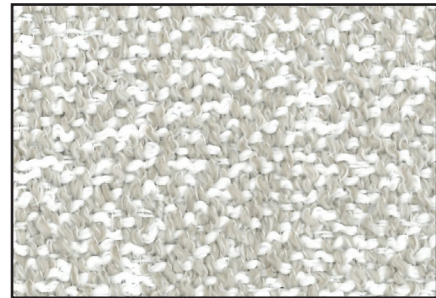
4GP

SCHEDA TECNICA / DATASHEET

COMPOSIZIONE composition	50% vi, 21% co, 19% li, 10% pl
ALTEZZA TESSUTO width	UNI 5113 cm 140
PESO/mq weight	UNI 5114 gr 500 mq
RESISTENZA ALL' ABRASIONE (martindale) abrasion resistance	BS 5960 IWS TM112 35000 rubs
PILLING TEST pilling resistance	4
RESISTENZA DEL COLORE ALLA LUCE ARTIFICIALE light fastness	UNI EN 20105-B02 4/5
SOLIDITA' ALLO SFREGAMENTO A SECCO solidity to dry rubbing	UNI EN ISO 105 X 12 4/5
SOLIDITA' ALLO SFREGAMENTO A UMIDO solidity to wet rubbing	UNI EN ISO 105 X 12 4/5
TEST INFIAMMABILITA' assessment of ignitability	CALIFORNIA TECHNICAL BULLETIN 117:2013;2015



In & Out category 6 - Fabric



M42



M43



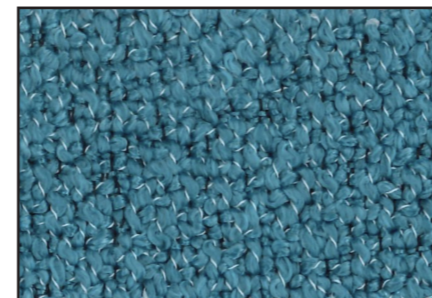
M55



M44



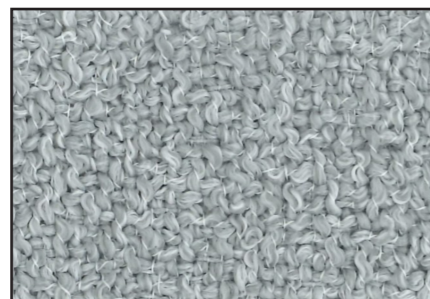
M41



M53



M49



M45



M51



M52



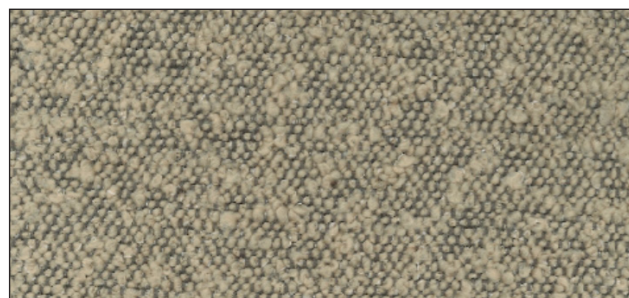
M48

In & Out category 6 - Fabric

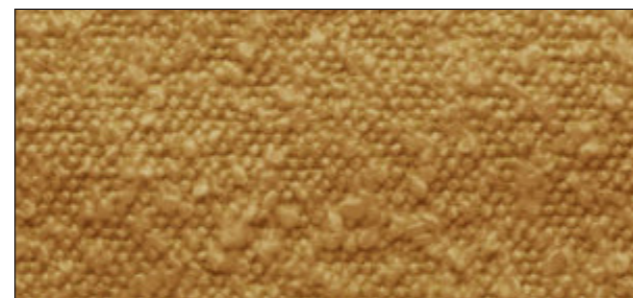
SCHEDA TECNICA / DATASHEET

Composizione / Composition	95% PP - 5% PL
Altezza del tessuto / Width	140 cm
Peso del tessuto al metro lineare / Weight	750 gr/ml.
La tonalità di colore può leggermente variare da una partita all'altra. Colortone may vary slightly	
PROVA	RISULTATO / RESULTS
RESISTENZA ALL'ABRASIONE / ABRASION RESISTANCE - Metodo Martindale EN ISO 12947-2	30.000 giri / cycles
SOLIDITA' DEL COLORE ALLA LUCE / COLOR FASTNESS TO LIGHT - Metodo UNI ISO 105-B02	7/8
SOLIDITA' DEL COLORE ALLO SFREGAMENTO / COLORFASTNESS TO RUBBING - Metodo ISO 105 X 12	Secco / Dry: 4/5 Umido / Wet: 4/5
RESISTENZA ALLA FORMAZIONE DI PILLING / PILING RESISTANCE - Metodo UNI EN ISO 12945-2	4

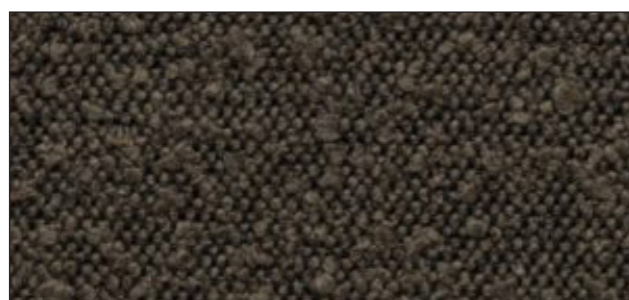
Privilege category 6 - Fabric



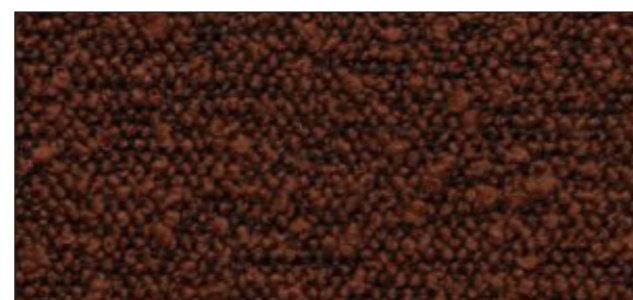
6P8



6P1



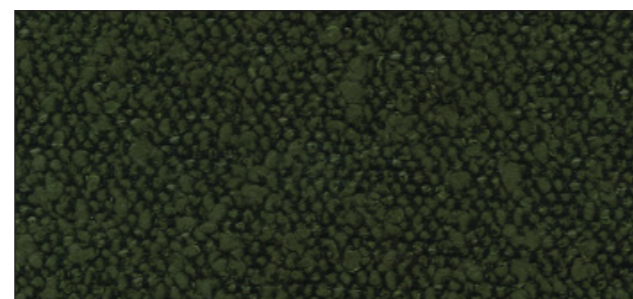
6P2



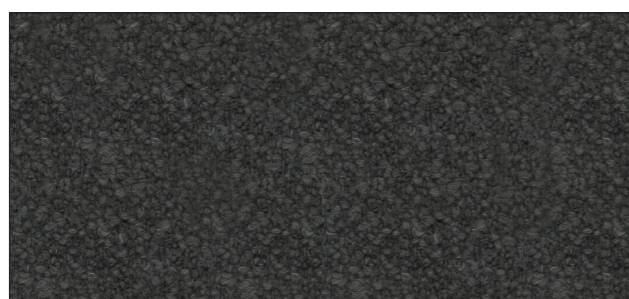
6P5



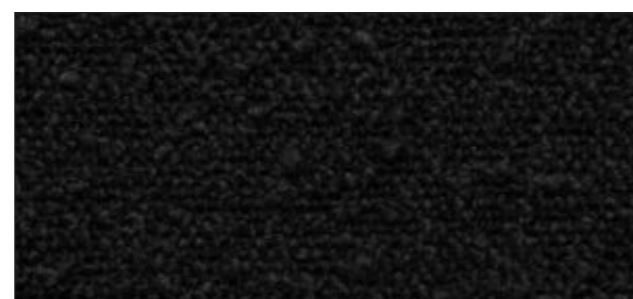
6P3



6P6

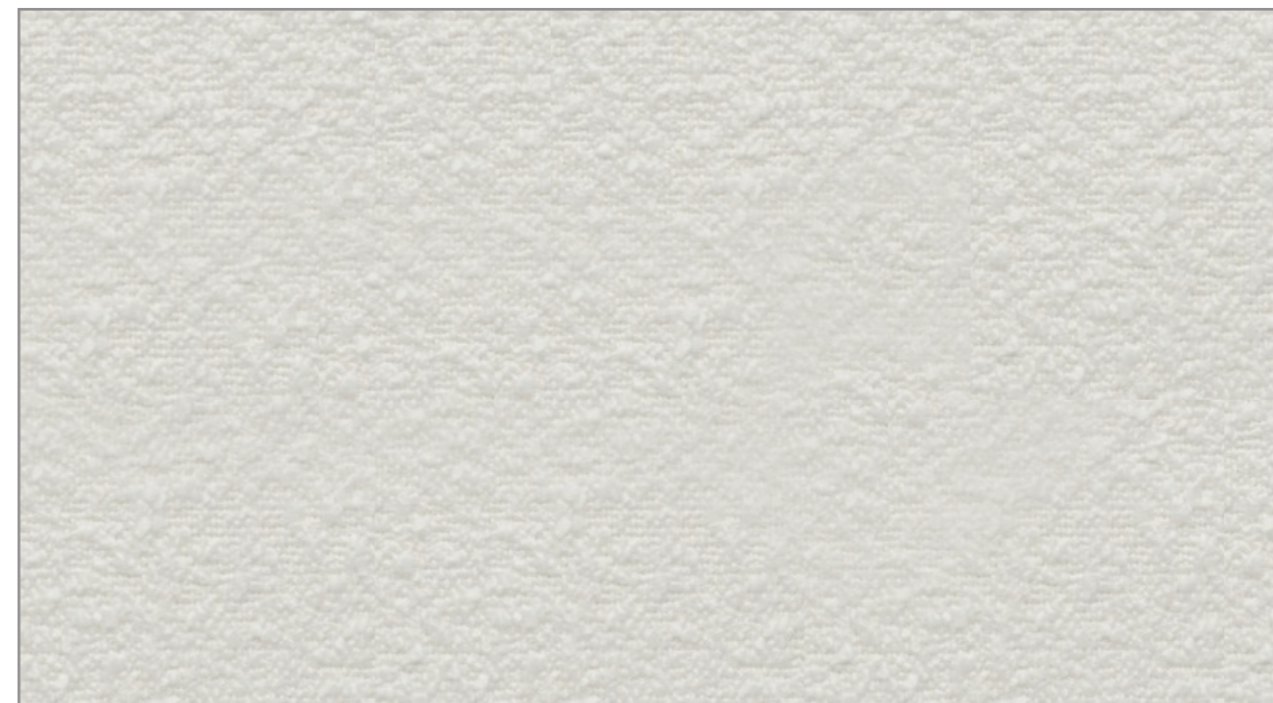


6P4



6P9

Privilege category 6 - Fabric



6P7

TECHNICAL INFORMATION

Composizione / Composition: 95% PL 5% PC

Peso / Weight: 855 gr/ml

Altezza / Height: 145 cm

Martindale: >80.000

Pilling: 4



Polo category 7 - Leather



P10



P47



P72



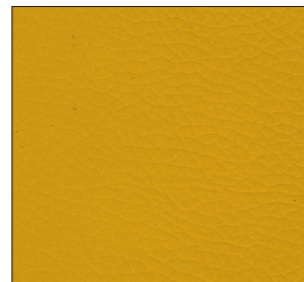
P30



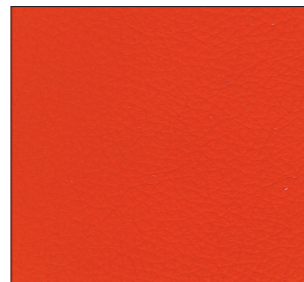
P32



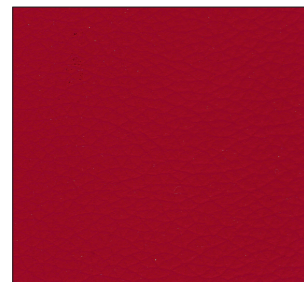
P31



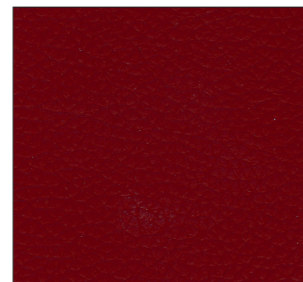
P36



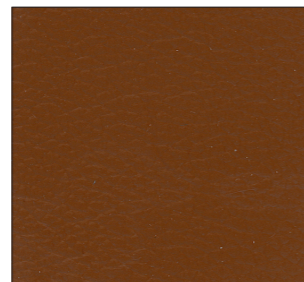
P39



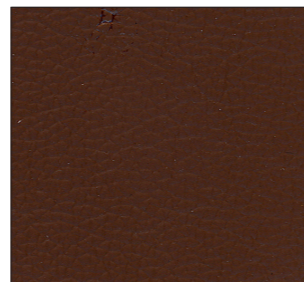
P42



P44



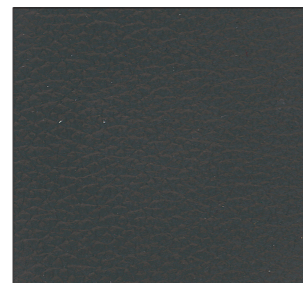
P23



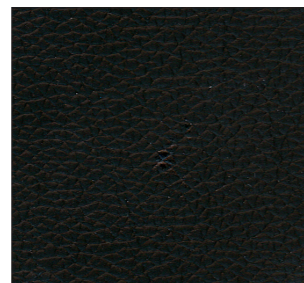
P24



P54



P58



P25



P84



P55



P60

Polo category 7 - Leather

Thickness	0,9/1,1 mm		Fire resistance
Origin	Raw Hides		British Standard BS 5852 Part I (1979)
Place of origin	European		N° 0: Cigarette Test passes
Tanning	Chrome salts		N°1: Match Test
Dyeing	Anline throught - dyeing		
Finishing	Pigments finishing		
Typology	Corrected grain		
Light fastness xenon lamp	UNI EN ISO 105 B02	Value > 8 Blu scale	Imo FTP part 8-Resolution A652 (16) NI/0: Cigarette test NI/1: Match Test passes
Tear strenghe	UNI EN ISO 3377 - 1	42 N/mm	
Dry rub fastness	ISO 11640	500 cycles value 4/5 grey scale	
Wet rub fastness	ISO 11640	250 cycles value 4/5 grey scale	
Flex crack resistance	ISO 5402	> 50.000 cycles	
Adhesion of finish	UNI EN ISO 11644 2008 - Dedalo Srl (Arzignano - VI)	9 N/cm	TB 117-A11@2013:2013 Cigarette Test (California) passes

Soft category 9 - Leather



117



195



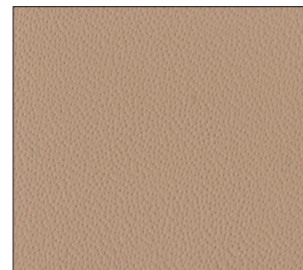
199



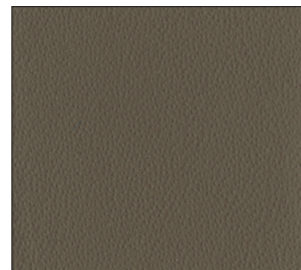
96



504



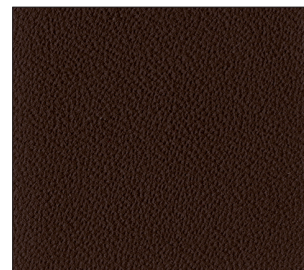
513



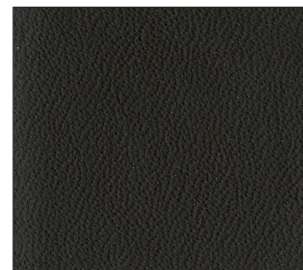
NH3



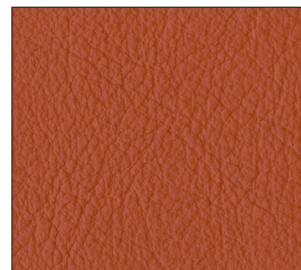
508



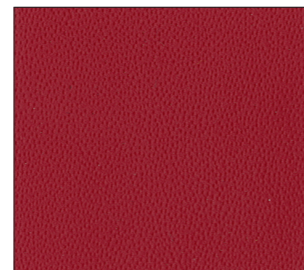
175



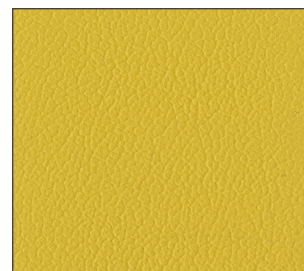
147



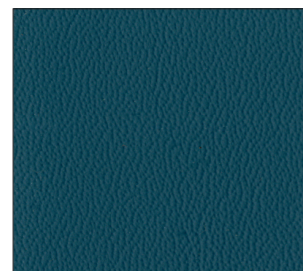
98



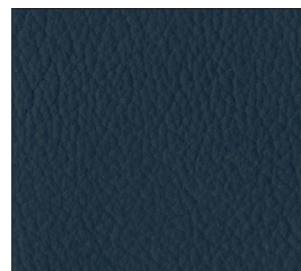
532



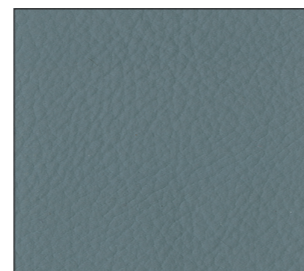
192



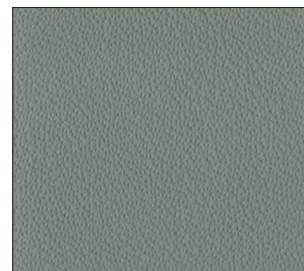
556



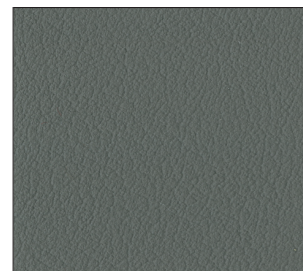
558



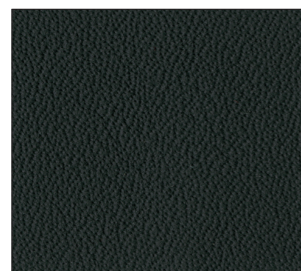
566



564



203



141



101

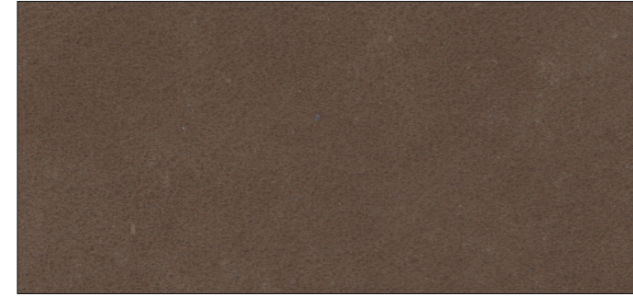
Soft category 9 - Leather

Thickness	1,1/1,2 mm	
Origin	Raw Hides	
Place of origin	European	
Tanning	Chrome salts	
Dyeing	Aniline through - dyeing	
Finishing	Water - based pigments	
Typology	Grain slightly corrected	
Light fastness xenon lamp	UNI EN ISO 105 B02	Value > 4 Blu scale
Tear strenghe	UNI EN ISO 3377 - 1	> 28 N/mm
Dry rub fastness	ISO 11640	500 cycles value 4 grey scale
Wet rub fastness	ISO 11640	80 cycles value 5 grey scale
Flex crack resistance	ISO 5402	25000 cycles
Adhesion of finish	UNI EN ISO 11644 2008 - Dedalo Srl (Arzignano - VI)	> 7,5 N/cm
Fire resistance	British Standard BS 5852 Part 1 (1979) N° 0: Cigarette Test N°1 : Match Test	pass

Savana category 9 - Leather



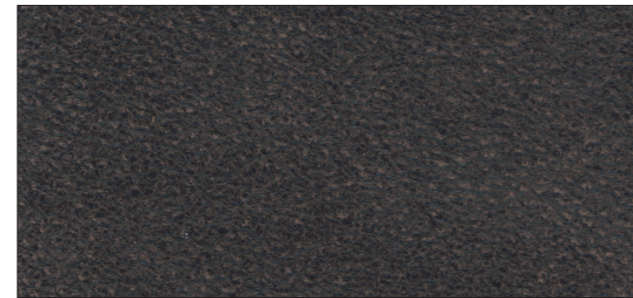
968



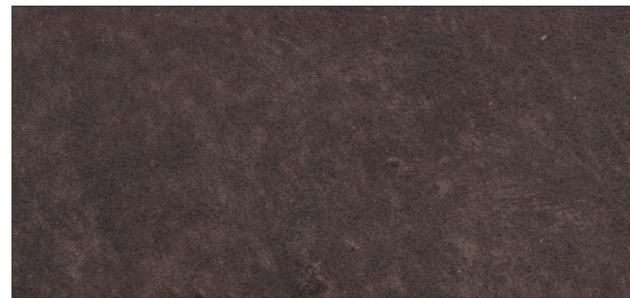
961



963



964



967

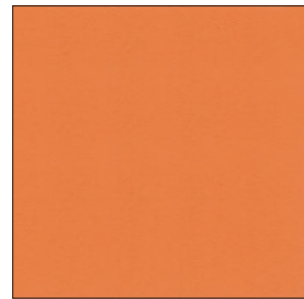


974

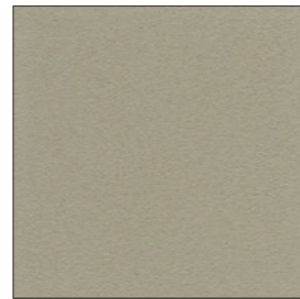
Thickness	1,3/1,5 mm
Origin	Raw Hides
Place of origin	European
Tanning	Chrome salts
Dyeing	Aniline through - dyeing
Typology	nubuck brushed by hand
Light fastness xenon lamp	UNI EN ISO 105 B02 Value > 3 Blu scale UNI EN ISO 3377 - 1 > 45 N
Tear strenghe	ISO 11640 500 cycles value 4 grey scale
Dry rub fastness	ISO 11640 250 cycles value 3/4 grey scale
Wet rub fastness	ISO 5402 > 50.000 cycles
Flex crack resistance	UNI EN ISO 11644 10,5 N/cm
Adhesion of finish	2008 - Dedalo Srl (Arzignano - VI)
Fire resistance	British Standard BS 5852 Part I (1979) N° 0: Cigarette Test N°1: Match Test passes

I COLORI SONO PURAMENTE INDICATIVI - COLORS ARE PURELY INDICATIVE -
LES COULEURS SONT PUREMENT INDICATIVES - DIE FARBABBILDUNGEN DER MATERIALIEN SIND REIN INDIKATIV

Polyuretane “Soft Touch”



X04 - ORANGE*



X09 - SAND



X07 - BLACK



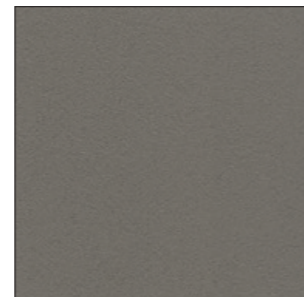
X15 - BROWN*



X05 - RED



X10 - YELLOW



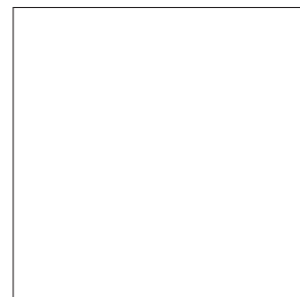
X16 - MUD



X03 - DARK GREY



X02 - LIGHT GREY



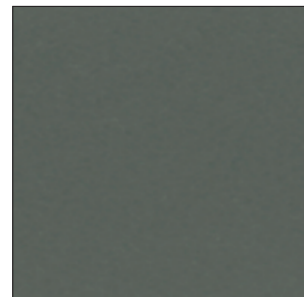
X01 - WHITE



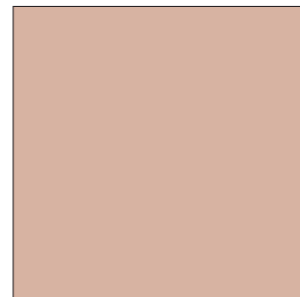
X08 - BLUE*



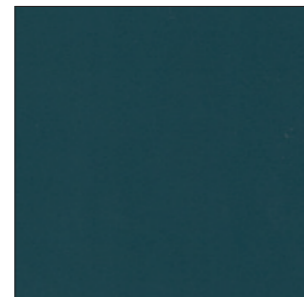
X19 - PIGEON BLUE



X21 - OLIVE GREEN



X22 - DUSTY PINK*



X23 - PETROL

SOFT TOUCH CERTIFICATIONS

The material used by Tonon for this collection satisfy the following regulations:

- Surfaces strength to cold liquids EN 12720/97
- Surfaces strength to cold liquids synthetic urine - quick-acting disinfection EN 12720/2013
- Colour strength to rubbing EN ISO 11640:1998
- Flame resistance 1.IM - BS CRIB 5 Cigarette test - CAL 117
- Surfaces strength to cleaning products PTP 53/95
- Ace bleach test, ammonia test (sol.10%), Baysan multipurpose, Lyso-Form for kitchen, Viakal, Vetril, Vim liquid, Cif multipurpose, Cif with bleach, Saniform 360
- Accelerated ageing through lamp UV ASTM G 154 -06

SOFT TOUCH COLLECTION BLEACH-CLEANABLE*

DISINFECTION OF THE “SOFT TOUCH COLLECTION” SUCCESSFULLY TESTED WITH A SOLUTION OF WATER AND 0.1% SODIUM HYPOCHLORITE.

With the measures prescribed in relation to the Corona virus, we are all facing new challenges. Hygiene measures have taken on a new importance. We all need to know who can protect us from viruses and bacteria. In the hotel and restaurant industry, this also includes sanitizing furniture. The new protocols for the restaurant and hotel industry prescribe sanitation after each guest and, if possible, to follow the recommendations of the World Health Organization. What is prescribed in the hospitality industry can also easily be carried out in everyday private life.

THE PROTOCOLS PRESCRIBE:

All surfaces must be cleaned with a solution of water and 0.1% sodium hypochlorite (the solution is formulated by adding 50 ml of 5% household bleach in 2.5 liters of water). The mixture formulated fights bacteria and germs, guarantees maximum cleaning and ensures that clean surfaces are sanitized.

WE TOOK UP THIS CHALLENGE AND TESTED OUR SOFT TOUCH COLLECTION WITH THIS FORMULA.

After 1000 cycles no changes were detected on the surface of the material and in the color. We are proud to inform you that the polyurethane used for “moon” facilitates quick and effective cleaning according to the most stringent sanitization protocols.

*=DISPONIBILE FINO AD ESAURIMENTO - **=LIMITED AVAILABILITY -

*=DISPONIBLE JUSQU'À ÉPUISEMENT DES STOCKS - **=AUSLAUFMODELLE/LIEFERBAR SOLANGE VORRAT REICHT

I COLORI SONO PURAMENTE INDICATIVI - COLORS ARE PURELY INDICATIVE -
LES COULEURS SONT PUREMENT INDICATIVES - DIE FARBABBILDUNGEN DER MATERIALIEN SIND REIN INDIKATIV

Wood Matt Finishing

Steel Finishing Lacquered

BEECH



1.101 - NATURAL BEECH



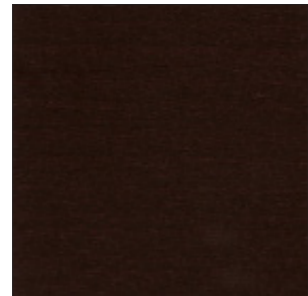
1.111 - BEECH BLACK



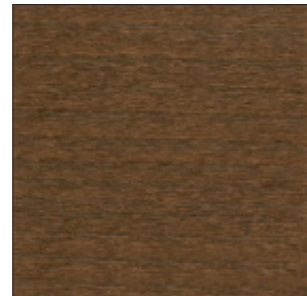
1.134 - BEECH BROWN



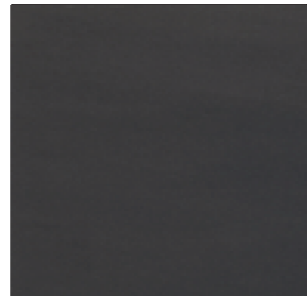
1.141 - BEECH
NATURAL CHERRY



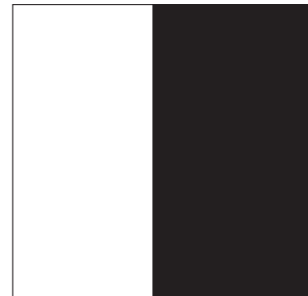
1.144 - BEECH WENGE



1.146 - BEECH
AMERICAN WALNUT

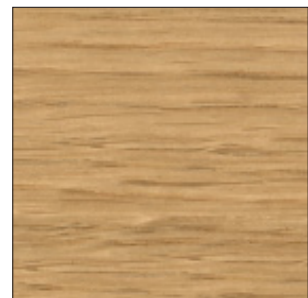


1.149 - BEECH
DARK GREY

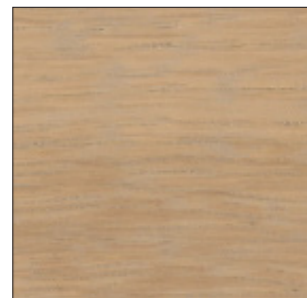


1.333 - WHITE MATT LACQ. 1.337 - BLACK
MATT LACQ.

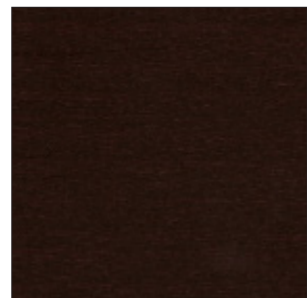
OAK



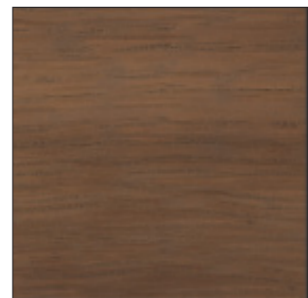
3.011 - OAK OILED



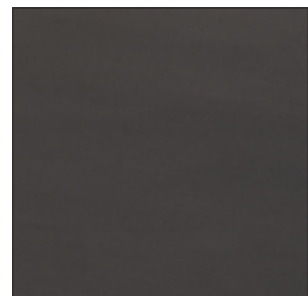
3.102 - NATURAL OAK



3.144 - OAK WENGE

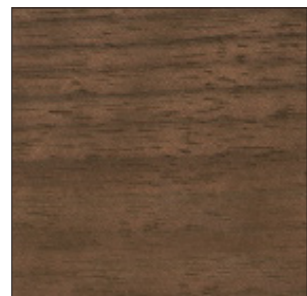


3.146 - OAK
AMERICAN WALNUT

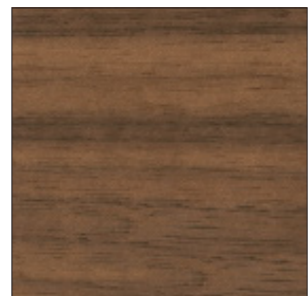


3.149 - OAK DARK GREY

AMERICAN WALNUT



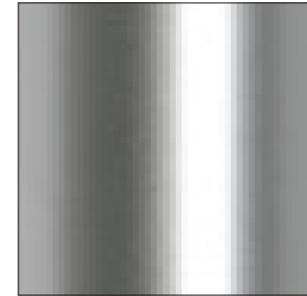
8.011 - AMERICAN WALNUT
OILED



8.146 - NATURAL
AMERICAN WALNUT



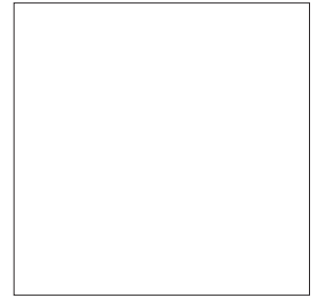
40 - CHROME



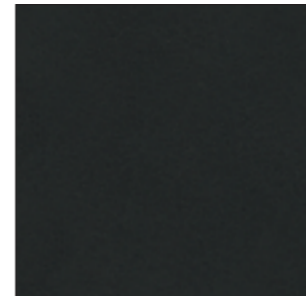
47 - MATT SATIN



76 - BURNISHED BROWN



61 - WHITE



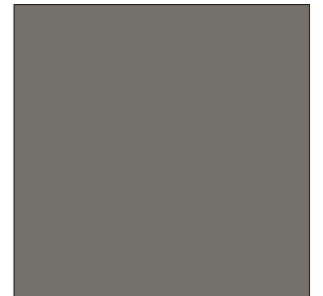
59 - DARK GREY



64 - BLACK



72 - GREY



74 - MUD



78 - BRONZE



71 - BRASS

TONON materials