

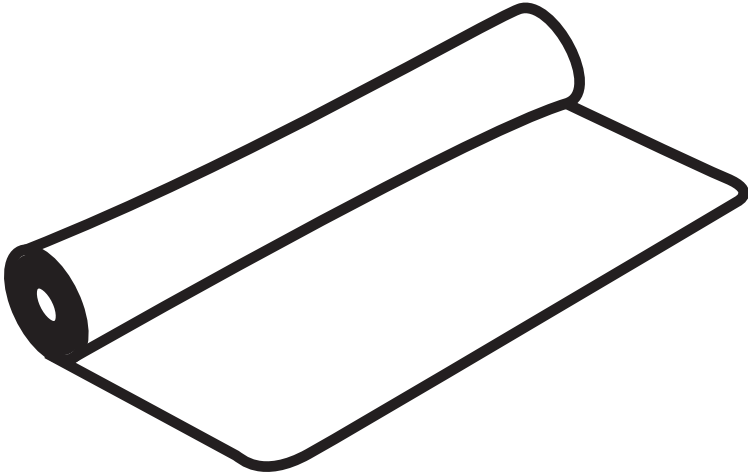
SCHEDA TECNICA / DATASHEET

Composizione / Composition95% PP - 5% PL	
Altezza del tessuto / Width140 cm	
Peso del tessuto al metro lineare / Weight750 gr/ml.	
La tonalità di colore può leggermente variare da una partita all'altra. Colortone may vary slightly	
PROVA	RISULTATO / RESULTS
RESISTENZA ALL'ABRASIONE / ABRASION RESISTANCE - Metodo Martindale EN ISO 12947-2	30.000 giri / cycles
SOLIDITA' DEL COLORE ALLA LUCE / COLOR FASTNESS TO LIGHT - Metodo UNI ISO 105-B02	7/8
SOLIDITA' DEL COLORE ALLO SFREGAMENTO / COLORFASTNESS TO RUBBING -Metodo ISO 105 X 12	Secco / Dry: 4/5 Umido / Wet: 4/5
RESISTENZA ALLA FORMAZIONE DI PILLING / PILING RESISTANCE - Metodo UNI EN ISO 12945-2	4
<div><div><div></div></div><div><div></div></div><div><div></div></div><div><div></div></div><div><div></div></div></div>	



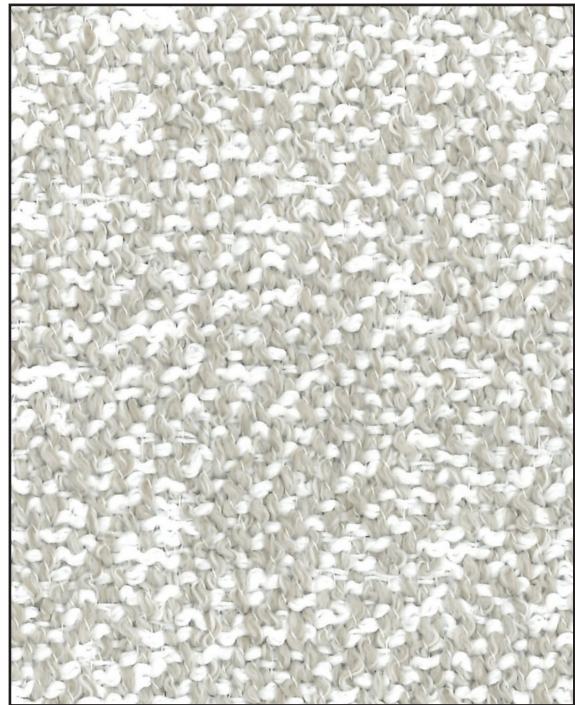
IN & OUT

category 6



IN & OUT category 6

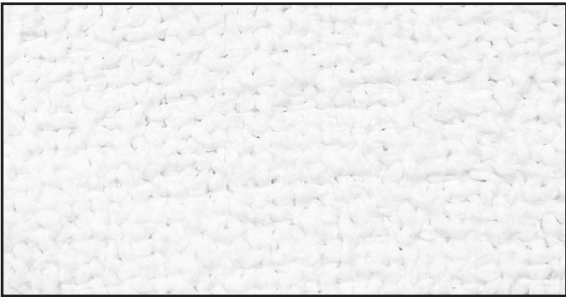
TONON



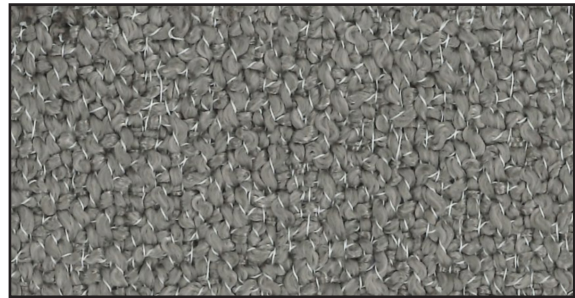
M42



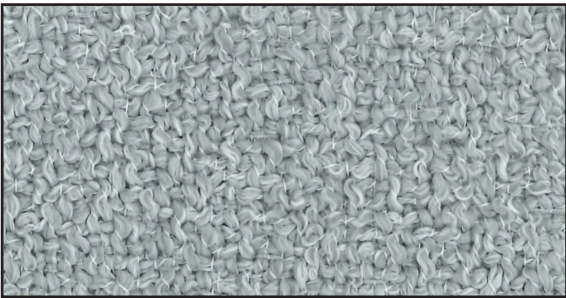
M43



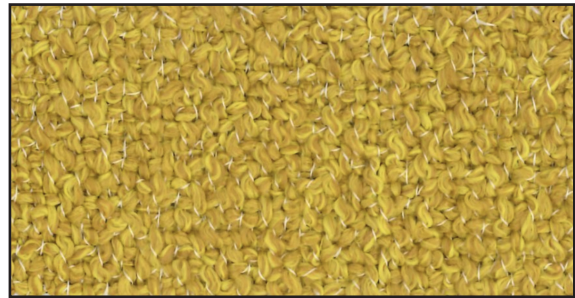
M41



M44



M45



M49



M48

IN & OUT category 6

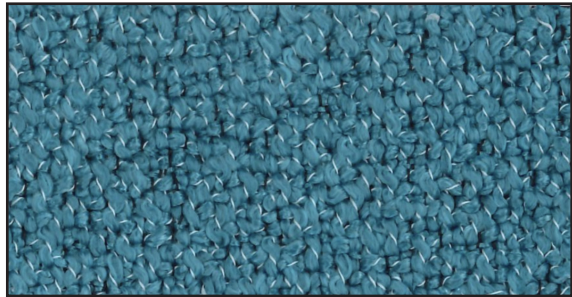
TONON



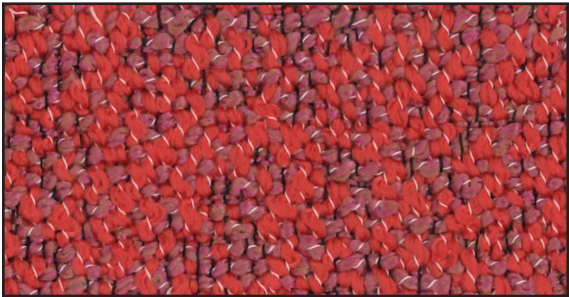
M55



M52



M53



M51

I COLORI SONO PURAMENTE INDICATIVI - COLORS ARE PURELY INDICATIVE -
LES COULEURS SONT PUREMENT INDICATIVES - DIE FARBABBILDUNGEN DER MATERIALIEN SIND REIN INDIKATIV